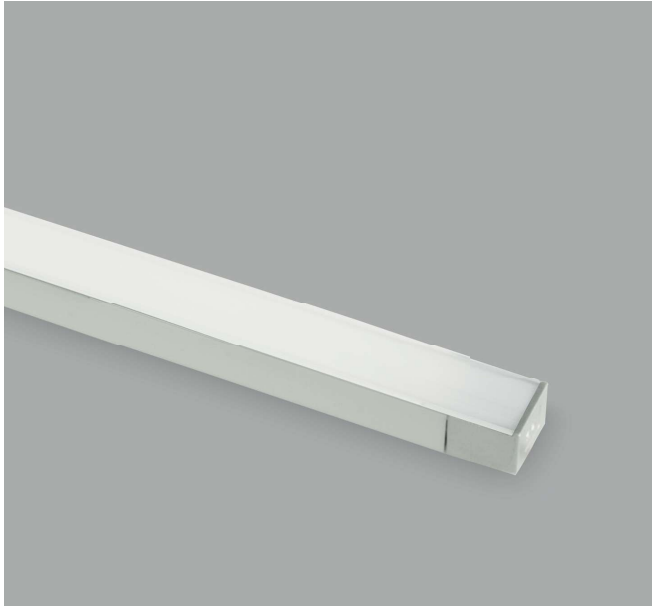




# Mec 1

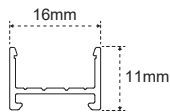


Anodised aluminium profile  
 Surface installation  
 Transparent or opal polycarbonate diffuser  
 Symmetrical emission  
 Anodised or black painted aluminium finish



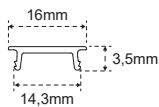
## PROFILES

 <sup>03</sup>	19700280300	3 m
 <sup>12</sup>	19700281200	3 m





## DIFFUSERS

Opaline	19700120100	3 m
Transp.	19700120000	3 m



## END CAPS

 <sup>03</sup>	13201080300	2 x
 <sup>12</sup>	13201080000	2 x



## FIXING BRACKET

13201110000

## 12 - 24 V SENSORS



### IRS SENSOR

Mono: 12807550001  
 EDC: 12808870001



### TOUCH SENSOR

12807510001



### PIR SENSOR

12807530001

## ELECTRIFICATION AND CONTROL



### STRIP REEL 10 mm

For the choice of Strip Reel go to page 118.



### CONNECTION CORDS

Connection from lamp to ballast, includes two springs to join the pieces without soldering.

3 m - 12 V: 12603960000  
 3 m - 24 V: 12603920000



### MEC DRIVER

See page 262 for the choice of power supply system.